



Rizzetta & Company

# Gramercy Farms Community Development District

---

**Board of Supervisors  
Meeting  
October 25, 2023**

District Office:  
8529 South Park Circle, Suite 330  
Orlando, Florida 32819  
407.472.2471

[www.gramercyfarmscdd.org](http://www.gramercyfarmscdd.org)

**GRAMERCY FARMS**  
**COMMUNITY DEVELOPMENT DISTRICT**

The playground located at Fieldwood Circle, St. Cloud, Florida 34772  
[www.gramercyfarmscdd.org](http://www.gramercyfarmscdd.org)

<b>Board of Supervisors</b>	Rolando Fernandez Joel Sanchez Elizabeth Fernandez Maria Borrero Bob Bishop	Chairman Vice Chairman Board Supervisor Board Supervisor Board Supervisor
<b>District Manager</b>	Brian Mendes	Rizzetta & Company, Inc.
<b>District Counsel</b>	Wes Haber	Kutak Rock
<b>District Engineer</b>	Greg Woodcock	Stantec

**All cellular phones must be placed on mute while in the meeting room.**

The Audience Comment portion of the agenda is where individuals may make comments on matters that concern the District. Individuals are limited to a total of three (3) minutes to make comments during this time.

Pursuant to provisions of the Americans with Disabilities Act, any person requiring special accommodations to participate in this meeting/hearing/workshop is asked to advise the District Office at least forty-eight (48) hours before the meeting/hearing/workshop by contacting the District Manager at (407) 472-2471. If you are hearing or speech impaired, please contact the Florida Relay Service by dialing 7-1-1, or 1-800-955-8771 (TTY) 1-800-955-8770 (Voice), who can aid you in contacting the District Office.

A person who decides to appeal any decision made at the meeting/hearing/workshop with respect to any matter considered at the meeting/hearing/workshop is advised that person will need a record of the proceedings and that accordingly, the person may need to ensure that a verbatim record of the proceedings is made including the testimony and evidence upon which the appeal is to be based.

# GRAMERCY FARMS DEVELOPMENT DISTRICT

District Office · Orlando, Florida · (407) 472-2471

Mailing Address · 3434 Colwell Avenue, Suite 200, Tampa, Florida 33614

[www.gramercyfarmscdd.org](http://www.gramercyfarmscdd.org)

**Board of Supervisors  
Gramercy Farms Community  
Development District**

**October 17, 2023**

## FINAL AGENDA

Dear Board Members:

The meeting of the Board of Supervisors of the Gramercy Farms Community Development District will be held on **October 25, 2023, at 9:00 a.m.** at the **playground** located at **Fieldwood Circle, St. Cloud, Florida 34772**. The following is the **final** agenda for the meeting:

- 1. CALL TO ORDER/ROLL CALL**
- 2. PUBLIC COMMENT**
- 3. COMMUNITY UPDATES**
  - A. Landscape Inspection Report..... Tab 1
  - B. Down to Earth Updates
  - C. HP Home Solutions Update
    1. Update on Fence Proposal
- 4. BUSINESS ADMINISTRATION**
  - A. Consideration of the Minutes of the Board of Supervisors Meeting held on August 31, 2023 ..... Tab 2
  - B. Ratification of Operation and Maintenance Expenditures for September 2023 (Under Separate Cover)
- 5. BUSINESS ITEMS**
  - A. Discussion of Replacement for Dead Plants
  - B. Discussion of Splash Pad
  - C. Discussion of Holiday Lights
    1. Nelson's Christmas Lights
    2. Lights by Santa
    3. HP Home Solutions
  - D. Discussion of Gramercy Farms 911 Call Report..... Tab 3
  - E. Discussion of Community Cameras Proposal(s)
  - F. Consideration of Sign Proposal(s) ..... Tab 4
- 6. STAFF REPORTS**
  - A. District Counsel
  - B. District Engineer
    1. Storm water Compliance
    2. Encroachment Issues
    3. Consideration of Proposal..... Tab 5
  - C. District Manager
- 7. SUPERVISOR REQUESTS AND COMMENTS**
- 8. ADJOURNMENT**

We look forward to seeing you at the meeting. In the meantime, if you have any questions, please do not hesitate to call us at (407) 472-2471.

Very truly yours,  
*Brian Mendes*  
Brian Mendes



**TAB 1**

# GRAMERCY FARMS

---

## LANDSCAPE INSPECTION REPORT



September 8, 2023  
Rizzetta & Company  
Bryan Schaub - Landscape Specialist



Rizzetta & Company  
Professionals in Community Management



# Summary, Dog Park & Main Entrance

## General Updates, Recent & Upcoming Maintenance Events

- Continue rotations to prune back overgrowing plants from the natural areas.
- Upcoming fertilization events for turf, beds & palms.
- Diagnose and treat all Schilling's Holly. It is spreading.

The following are action items for **Down To Earth Landscaping** to complete. Please refer to the item # in your response listing action already taken or anticipated time of completion. **Red text** indicates deficient from previous report. **Bold Red text** indicates deficient for more than a month. **Green text** indicates a proposal has been requested. **Blue** indicates irrigation. **Orange** is for Staff.

1. At the dog park parking area, remove the vines covering the Viburnum hedge that was recently pruned. (Pic 1)



2. In the same area, remove the weeds from the beds.
3. In the beds near the court, treat the Juniper for Mites & prune out dead material.
4. In the same area, detail the beds include weeding – hand pulling the larger weeds, removing dead plants, and pruning.
5. Property-wide, treat all active ant mounds. Rake out all mounds once they are inactive to turf level.

6. **Property-wide, remove all mosses from trees and shrubs.**

7. Repairs to the drip grids has been completed, but there are sections of exposed drip lines that need to be stapled.

8. **Near the courts, set strong bed lines for the beds.**

9. **Property-wide, remove the suckers from all trees, especially the Crape Myrtles.**

10. **Around the dog park & at the main entrance area, detail beds including weeding, edge & generally maintain the areas. (Pic 10)**





# GFB, Court & Main Entrance

**11. To the east of the dog fence, remove the vines from the Viburnum. (Pic 11)**



12. In the same area, diagnose & treat the stressed and declining Viburnum hedge.

**13. At the dog park parking area, directly north of the sidewalk & property-wide, drip irrigation is raised, has been cut with an edger in the past & repaired. Bury the drip grid to avoid this occurring again.**

14. Around the dog park & at the main entrance area, remove all suckers growing up in the beds.

**15. In the beds near either entrance monument, remove all weeds. Hand pull or dig out the large weeds. (Pic 15)**



16. In the south ROW of GFB at the main entrance, a vehicle damaged the turf. Repair as possible.

17. In the south monument beds, remove all weeds & detail. (Pic 17)



18. At the main entrance, remove the grasses from the Juniper.

**19. Along Old Hickory, detail all beds as they are overgrown with vines & weeds. The beds were treated with herbicide, but the dead plant material needs to be removed.**

20. In the north ROW of GFB near the main entrance, remove all weeds including

**21. In both ROWs of GFB, remove the vines in the Viburnum. They were rejuve cut, but the vines were sheered off and not removed. There is excellent access to the stems and root of these vines, currently.**

22. At the corner of Mosshire & GFB, prune the Roses & treat the stressed units.

23. In the same bed, remove all weeds. Hand pull large weeds.

24. Property-wide, treat all expansion joint crack weeds.





- 25. In the north ROW of GFB, prune the Loropetalum.
- 26. In the south ROW of GFB, investigate & treat the stressed Pine trees. Most likely this is Pine Bore.
- 27. In the north ROW of GFB by the Round About, line trim around the lone tree near the natural area. (Pic 27)



- 28. Along both ROWs of GFB, the fungus in the Shilling's Holly is back. It appears to be Cyindrocladium Leaf Spot. Diagnose, treat & prune dead material. It is spreading rapidly. Replace dead Schilling's Holly units. (Pic 28)



- 29. Along GFB, remove all weeds from the shrubs & hedges.

- 30. Along GFB, discontinue practice of blowing grass clippings into beds.
- 31. Property-wide, remove all suckers on the Live Oaks. They are getting long.
- 32. At the Round About pull the tall weeds out of the Ornamental Grasses.
- 33. Diagnose & treat the Juniper at the Round About.
- 34. Detail the bush/tree clusters near the creek between Baler Trails & Valley Creek.
- 35. Prune all encroaching plant material that is over growing the sidewalks.
- 36. Along GFB, there are multiple locations where the drip line irrigation must be adjusted, as it is wrapped around trees. (Pic 36)



- 37. On GFB in between the sidewalk & pond, there is a dead tree. It needs to be removed.
- 38. In the north boundary from 2801 to 2839 Shelburne & at cul-de-sac, there is still brush growing into back yards. Continue to clear & all maintained regularly.
- 39. All natural areas especially around pond banks need to be cut back.



# Townhomes, GFB & Sweet Acres

40. Remove the Brazilian Pepper Tree that is growing on the edge of the mowed area in between the Townhomes & GFB. (Pic 40)



45. In the boundary area surrounding the Sweet Acres neighborhood, detail the area (where accessible) including weeding, pruning to achieve plant separation, mowing, line trimming & setting strong bed lines. (Pic 45)



41. In the NW corner of the Townhomes area, continue to detail the beds containing Ornamental Trees & Firebush. Include pruning into consistent shapes & for plant separation, weed removal & setting strong bed lines.

42. In the Ivy Stable park, remove all weeds/vines, set strong bed lines, prune the Grasses & treat the Grasses for Mites.

43. In the same park, continue to treat the turf for broadleaf & grassy weeds.

44. In both ROWs & the median of GFB, remove all weeds as they are taking over. (Pic 44)



46. Property-wide, be more consistent with edging of hard surfaces.

**47. Lift all trees over sidewalks & roads up to FDOT and scope specs.**

48. Check for any water flow structures that are overgrown. Report & these will need to be cleared.

**49. Detail the beds including pruning hedge into a consistent shape & to achieve plant separation, weeding & setting strong bed lines for the beds to the west of the pond between Glencrest & Sweet Acres. This bed looks to have been missed.**

50. In the Viburnum hedges running east & south from the lift station, continue to set bed lines, prune to consistent height & prune for plant separation.

51. Along the areas behind Baler & Orchard Grove, continue to detail the beds, set strong bed lines, pruning, and mowing. Grasses & weeds need to be maintained on a regular basis.



# GFB, Baler, Harlow & Sweet Acres

52. Near the end of GFB at Harlow, diagnose & treat the Roses. Prune out dead material & deadhead. (Pic 52)



**56. At the Harlow mail kiosk, detail the beds & tree rings.**

57. Along the stretch of Harlow between 2946 & 2970, continue to detail the tree rings including setting strong bed lines & remove the suckers from the Live Oaks.

**58. In the same area, fix the bubbler on the Live Oak.**

53. In the same area, diagnose & treat the Juniper. This may have been caused by the irrigation repairs. If so, remove and replace dead units. (Pic 53)



**54. At the end of GFB at Harlow on the back side of the pond, diagnose and treat the stressed Magnolia. Also, straighten the tree. Remove the dead plant material, weeds beds, set strong bed lines & prune.**

55. Continue to treat the turf at the park on Sweet Acres, for Sedge, grassy weeds & broadleaf weeds as they are taking over. Continue to improve the vigor & coverage of the turf and then start reel mowing.





# Walls, Fences, Benches & Equipment

1. The roof on the pavilion at the dog park needs to be cleaned, There is also new graffiti & new vulgar graffiti on the posts & columns. (Pic 1 >)

2. In the same park, the water fountains are not working. The dog fence repairs are completed.

3. At the same park, there is bent playground equipment.

4. In the same park, all the benches have exposed and/or rusty metal areas. There are also, new, bent areas of metal, present.

5. At all three parks with playground equipment, the playground mulch is too low.

6. At the courts, one of the basketball nets is ripped.

7. In the north ROW of GFB between Mosshire & the Round About, the Round About speed sign is bent and leaning.

8. At the Ivy Stable park, the benches have rust and more NEW damage. (Pic 8 >)

9. At the Sweet Acres park, there is a sign down on the turf.

10. At the Sweet Acres & Ivy Stable parks, there are more new fence sections with mildew. (Pic 10 >)

11. At the Ivy Stable park, the pavilion roof has rust, moss & mildew. There is, also graffiti on the pavilion.

12. At the Sweet Acres park on the south side near the sidewalk entrance, there are two broken fence runners.

13. At the Sweet Acres pavilion there is rust on the beams/posts & graffiti on the posts.



14. At the Sweet Acres park, there is mold/mildew & graffiti on the playground equipment.

15. At the intersection of GFB & Harlow, the stop sign is leaning.





# Walls, Fences, Benches & Equipment

16. At the Ivy Stable park, the fence on the GFB side has more bent slats.
17. At the Sweet Acres playground, there is a busted panel of the equipment.
18. At the Ivy Stable park, there is broken playground equipment.
19. At the Sweet Acres park, there is more, newer graffiti and some vulgar graffiti on the benches. (Pic 19 >)



# Proposals

1. Down to Earth to generate a proposal to redesign the monument beds at the main. Provide plant options for the board. Include transplanting the Dracaena. Also include, prep, demolition, clean up, disposal, soil, mulch & any irrigation repairs or adjustments. (Pic 1 >)
2. Down to Earth to generate a proposal to remove a dead tree on GFB. Include line items for flush cutting and stump grinding and a replacement option. Include prep, demolition, clean up, disposal, soil, mulch & any irrigation repairs or adjustments. (Pic 2 >)



**TAB 2**

**MINUTES OF MEETING**

**Each person who decides to appeal any decision made by the Board with respect to any matter considered at the meeting is advised that the person may need to ensure that a verbatim record of the proceedings is made, including the testimony and evidence upon which such appeal is to be based.**

**GRAMERCY FARMS COMMUNITY DEVELOPMENT DISTRICT**

The special meeting of the Board of Supervisors of Gramercy Farms Community Development District was held on **Wednesday, September 27, at 9:00 a.m.** at the playground located at **Fieldwood Circle, St. Cloud, Florida, 34769.**

Present and constituting a quorum:

Rolando Fernandez	<b>Board Supervisor, Chairman</b>
Joel Sanchez	<b>Board Supervisor, Vice Chairman</b>
Maria Borrero	<b>Board Supervisor, Assistant Secretary</b>
Elizabeth Fernandez	<b>Board Supervisor, Assistant Secretary</b>

Also present were:

Brian Mendes	<b>District Manager, Rizzetta &amp; Co., Inc.</b>
Bryan Schaub	<b>Field Services Manager, Rizzetta &amp; Co, Inc</b>
Wes Haber	<b>District Counsel, Kutak Rock, LLP</b>
Justin Baker	<b>Landscaping, Down to Earth</b>
Michael Furber	<b>Landscaping, Down to Earth</b>
Greg Woodcock	<b>District Engineer, Stantec</b>
Hector Pastrana	<b>Handyman Services, HP Home Solutions</b>
Steven Campbell	<b>Supervisor, Aquatic Weed Management</b>

Audience **Present**

**FIRST ORDER OF BUSINESS**

**Call to Order/Roll Call**

Mr. Mendes called the meeting to order and confirmed a quorum.

**SECOND ORDER OF BUSINESS**

**Public Comment**

A member of the audience inquired about the reimbursement KB Homes has been seeking from CDD.

**THIRD ORDER OF BUSINESS**

**Community Updates**

A. Landscape Inspection Report

Mr. Schaub presented his report to the board. He spoke on improvements made by Down to Earth. He noted irrigation repairs needed. He stated he received the proposal for the tree.

Ms. Borrero inquired about plants to be replaced in the front of the community.

It was stated that the valve box lids are destroyed and need to be replaced.

B. Down to Earth Updates

Mr. Baker presented reports to the board. He spoke on the areas they've been focusing on. He also spoke on section enhancements. He touched on mowing issues with certain areas near the ponds that are being left with tire tracks.

A resident reported lawn clippings were being blown into a homeowner's fence.

C. Hp Home Solutions Project Update

Mr. Pastrana updated the board of supervisors on several community projects. He stated that the paint job was completed. He touched on monthly maintenance services for the community. He stated they have been cleaning the trash around the ponds. He stated that the dog station will be installed next week. He spoke on removing the graffiti across the community. He stated that KB signs need to be removed because they are decaying. He spoke of a resident dumping materials over the property fence. He touched on sidewalk hazards throughout the community. He stated there are signs throughout the community that are leaning.

D. Aquatic Maintenance Report

Mr. Campbell reported a few topics to the board. He stated that algae is down. He also stated that torpedo grass/hidrela are still a problem.

Ms. Borrero requested monthly walk-throughs for all vendors.

**FOURTH ORDER OF BUSINESS**

**Consideration of the Minutes of the  
Board of Supervisors Meeting held on  
August 23<sup>rd</sup>, 2023**

Mr. Mendes presented the meeting minutes of the board of Supervisors meeting held on August 23<sup>rd</sup>, 2023 and asked if any changes are requested. No changes were requested.

On a motion by Ms. Borrero, seconded by Mr. Sanchez, with all in favor, the Board approved the Minutes of the Board of Supervisors' Meeting held on August 23 <sup>rd</sup> , 2023, as amended, for the Gramercy Farms Community Development District.
--

49  
50  
51  
52  
53  
54  
55  
56  
57  
58  
59  
60  
61  
62  
63  
64  
65  
66  
67  
68  
69  
70  
71  
72  
73  
74  
75  
76  
77  
78  
79  
80  
81  
82  
83  
84  
85  
86  
87  
88  
89  
90  
91  
92  
93

**FIFTH ORDER OF BUSINESS**

**Ratification of Operation and  
Maintenance Expenditures for August  
2023**

Mr. Mendes presented the Operation and Maintenance Expenditures for August 2023.

Ms. Borrero inquired about the month's expense.

Mr. Fernandez inquired about late fees.

On a motion by Mrs. Borrero, seconded by Mr. Sanchez, with all in favor, the Board ratified the operation and maintenance expenditures for August 2023 (\$91,306.01), for the Gramercy Farms Community Development District.

**SIXTH ORDER OF BUSINESS**

**Discussion of Off Duty Patrol**

Mr. Mendes opened the discussion.

Ms. Borrero stated the district cannot afford this expense and briefed the board on her experience with this topic.

Ms. Borrero requested a year-to-date report from Lin on a 9-1-1 call from the community.

**SEVENTH ORDER OF BUSINESS**

**Discussion of Records Request**

Mr. Mendes briefed the board on the topic of discussion.

Ms. Fernandez will send these items to the district manager.

**EIGHTH ORDER OF BUSINESS**

**Consideration of Egis Proposal**

Mr. Mendes presented the proposal to the board of supervisors and asked if there were any questions. The board inquired about the cost. Mr. Mendes reviewed the proposal & budget and confirmed that this was budgeted for.

On a motion by Ms. Borrero, seconded by Mr. Sanchez, with all in favor, the Board approved the Egis Proposal for Insurance policy renewal for FY 2023-2024, for the Gramercy Farms Community Development District.

**NINTH ORDER OF BUSINESS**

**Consideration of Trash Clean up  
Proposal**

Mr. Mendes presented the proposal to the board of supervisors and asked if there were any questions.

135 Ms. Borrero stated the district is in a good place with HP Home Solutions handling this  
136 service in their scope.

137  
138 The board requested this item be tabled.

139  
140 **TENTH ORDER OF BUSINESS**

**Staff Reports**

141  
142 **A. District Counsel**

143 Mr. Haber presented a report to the board of supervisors and asked if there were  
144 any questions. There were none.

145  
146 **B. District Engineer**

147 Mr. Woodcock presented a report to the board of supervisors. He stated that the grates  
148 need to be replaced. He also stated he is waiting for proposals which will be covered  
149 at the next meeting.

150  
151 Mr. Mendes inquired about the sidewalk hazards.

152  
153 Ms. Borrero stated to report the sidewalk hazard to the city.

154  
155 Ms. Borrero recommended blocking out hazardous sidewalk areas.  
156

On a motion by Mr. Sanchez, seconded by Ms. Borrero, with all in favor, the Board approved blocking the hazardous sidewalk areas, for the Gramercy Farms Community Development District.

157  
158 Mr. Mendes inquired about fences that are encroaching on CDD property.

159  
160 Mr. Woodcock states for the board to work with the district manager to resolve  
161 encroachment issues.

162  
163 Mr. Mendes gathered home addresses of residents violating this issue.

164  
165 Counsel followed up with additional information and stated for the board to explore  
166 the city sending out letters as well.

167  
168 **C. District Manager**

169 Mr. Mendes presented the board with a report on cameras and stated he will be  
170 gathering additional proposals.

171  
172 Mr. Mendes spoke on OUC issues.

173  
174 Counsel covered that the CDD has assumed responsibility for phase 1 lights.

175  
176 Counsel covered on taking on the fence issue. It was stated the CDD will provide a  
177 quote on repairs to the fence.

178  
179 Counsel touched on reimbursement issues to KB Home and the OUC refunded the

180 CDD for expenses.

181  
182 Counsel advised the board if KB takes litigation action, Mr. Haber recommended the  
183 board to hire litigation counsel if this happens.

184  
185 Mr. Mendes stated he is going to work on evaluating fence.

186  
187 It is stated that the district has the right to remove sales signs. It is stated district  
188 staff will work with counsel to send a letter.

189  
190 **ELEVENTH ORDER OF BUSINESS** **Supervisor Requests and Comments**

191  
192 There were no supervisor requests.

193  
194 **TWELFTH ORDER OF BUSINESS** **Adjournment**

195  
196 On a motion by Mrs. Borrero, seconded by Ms. Fernandez, with all in favor, the Board  
197 adjourned the Board of Supervisors' Meeting at 10:19 a.m. for Gramercy Farms  
198 Community Development District.

199  
200  
201  
202  
203

<hr/> <b>Assistant Secretary</b>	<hr/> <b>Chairperson/Vice Chairman</b>
----------------------------------	--



**TAB 3**

## How To Read A Calls For Service Print Out

**Call Time-** The time the call was received by dispatch.

**Event ID-** All calls that we receive are assigned an event number. We also call it a CAD call number.

How to read an Event ID:

- The first four numbers will always be the calendar year.
- The next three numbers are the Julian calendar day.
- The remaining numbers are the call number for the day, which starts at midnight with the number one.

**2023279110**

This call would be the **110<sup>th</sup>** call for **October 6, 2023**.

**RPT #-** If an officer took a report, the number will be in this column. Report numbers are pulled for written reports, field interviews, to document trespass, crash reports, etc.

**Street-** The address where the incident occurred.

**Nature-** What type of call was received.

# COMMUNICATIONS

Call Time	Event ID	Rpt #	Street	Nature
10/03/2023 18:05:28	2023276223		4758 MAPLEWILD LN	RESIDENTIAL HOLD UP PANIC DURE
09/29/2023 20:38:56	2023272323		3108 SWEET ACRES PL	SUSPICIOUS VEHICLE
09/29/2023 15:02:53	2023272244		4643 CALUMET DR	CUSTODY ISSUE
09/24/2023 22:34:05	2023267204		2883 HARLOW AVE	OTHER NOISE COMPLAINT
09/24/2023 21:31:32	2023267196		2883 HARLOW AVE	OTHER NOISE COMPLAINT
09/23/2023 07:47:20	2023266059		BALER TRAILS DR/WAGON WHEEL TRL	INFORMATION
09/22/2023 16:46:44	2023265194	23005667	2891 HARLOW AVE	ASSAULT
09/22/2023 16:35:14	2023265192		4680 GLENCREST LOOP	911 OPEN LINE
09/21/2023 11:23:40	2023264103		3085 SWEET ACRES PL	SUSPICIOUS VEHICLE
09/21/2023 10:32:18	2023264087		2934 FIELDWOOD CIR	911 OPEN LINE
09/21/2023 07:07:28	2023264030		3077 SWEET ACRES PL	INFORMATION
09/20/2023 09:06:16	2023263071		3089 SWEET ACRES PL	SUSPICIOUS VEHICLE
09/18/2023 18:20:09	2023261228		3065 LAKES CREST AVE	ASSIST OTHER AGENCY NON URGENT
09/18/2023 09:34:22	2023261062		2861 MOSSHIRE CIR	OTHER NOISE COMPLAINT
09/17/2023 10:06:48	2023260093		2855 MOSSHIRE CIR	PUBLIC SERVICE CALL
09/16/2023 11:50:25	2023259138		4514 CALUMET DR	INTELLIGENCE LED POLICING
09/16/2023 11:23:52	2023259130		2845 SHELBURNE WAY	911 HANG UP
09/16/2023 04:07:07	2023259072		2936 FIELDWOOD CIR	REPOSSESSION
09/14/2023 15:54:48	2023257187	23005511	4578 CALUMET DR	FRAUD
09/12/2023 22:38:46	2023255289		4595 BALER TRAILS DR	DUPLICATE CALL
09/12/2023 22:33:58	2023255288		4595 BALER TRAILS DR	RESIDENTIAL BURGLARY ALARM
09/10/2023 17:10:17	2023253154		2853 MOSSHIRE CIR	CITIZEN ASSIST
09/10/2023 09:31:06	2023253096		3208 SWEET ACRES PL	RESIDENTIAL BURGLARY ALARM
09/08/2023 17:51:45	2023251219		3151 SWEET ACRES PL	SUPPLEMENTAL GENERAL CASE INFO
09/08/2023 10:14:17	2023251113		3151 SWEET ACRES PL	SUPPLEMENTAL GENERAL CASE INFO
09/08/2023 02:34:02	2023251012		2829 SHELBURNE WAY	REPOSSESSION
09/07/2023 16:39:35	2023250179		3074 FIELDWOOD CIR	PAST THEFT
09/07/2023 01:37:13	2023250025		4582 BALER TRAILS DR	REPOSSESSION
09/06/2023 22:50:49	2023249344		GRAMERCY FARMS BLVD/VALLEY CREEK D	TRAFFIC STOP
09/06/2023 17:51:16	2023249252	23005347	2915 FIELDWOOD CIR	FRAUD
09/06/2023 17:38:58	2023249251		4685 GLENCREST LOOP	REPOSSESSION

Call Time	Event ID	Rpt #	Street	Nature
09/06/2023 16:29:35	2023249240	23005345	3151 SWEET ACRES PL	PHYSICAL DOMESTIC DISTURBANCE
09/06/2023 13:57:58	2023249161		2805 WAGON WHEEL TRL	HARRASSMENT JUST OCCURRED
09/06/2023 10:48:12	2023249103	23005337	4578 BALER TRAILS DR	PAST FRAUD
09/06/2023 08:16:08	2023249062		3151 SWEET ACRES PL	CITIZEN ASSIST
09/05/2023 20:05:14	2023248245		4725 GLENCREST LOOP	PUBLIC SERVICE CALL
09/05/2023 15:14:44	2023248179		4593 BALER TRAILS DR	LOST PROPERTY
09/04/2023 11:44:03	2023247115		4521 ORCHARD GROVE RD	RECKLESS DRIVER
09/02/2023 20:01:22	2023245204		4507 BALER TRAILS DR	LOST PROPERTY
08/30/2023 11:15:20	2023242063	23005206	4728 GLENCREST LOOP	THREATENING SUICIDE
08/29/2023 18:34:11	2023241234		2832 SHELBURNE WAY	PUBLIC SERVICE CALL
08/29/2023 18:33:43	2023241233		2832 SHELBURNE WAY	DUPLICATE CALL
08/27/2023 18:23:41	2023239150		3065 LAKES CREST AVE	INVESTIGATION SUPPLEMENTAL
08/27/2023 16:27:29	2023239131		2900 IVY STABLE LN	TRAFFIC
08/27/2023 15:23:23	2023239126		3065 LAKES CREST AVE	CHECK WELFARE
08/26/2023 19:28:04	2023238193		2801 SHELBURNE WAY	PUBLIC SERVICE CALL
08/26/2023 14:38:27	2023238132		4763 MAPLEWILD LN	DUPLICATE CALL
08/26/2023 14:35:28	2023238131		4763 MAPLEWILD LN	911 HANG UP
08/25/2023 19:43:02	2023237252		2968 FIELDWOOD CIR	RECKLESS ACTIVITY
08/25/2023 08:11:17	2023237053		4544 ORCHARD GROVE RD	CITIZEN ASSIST
08/24/2023 10:58:38	2023236106		4534 CALUMET DR	RESIDENTIAL BURGLARY ALARM
08/22/2023 16:25:08	2023234222		2951 FIELDWOOD CIR	REPOSSESSION
08/21/2023 19:58:26	2023233242		2819 SHELBURNE WAY	SUSPICIOUS INCIDENT
08/21/2023 14:13:22	2023233170		2933 FIELDWOOD CIR	PRIVATE PROPERTY REMOVAL
08/19/2023 23:51:08	2023231250		2942 HARLOW AVE	INVESTIGATION SUPPLEMENTAL
08/19/2023 19:39:34	2023231194		2970 HARLOW AVE	DUPLICATE CALL
08/19/2023 19:31:20	2023231193	23004968	2942 HARLOW AVE	PHYSICAL DOMESTIC DISTURBANCE
08/19/2023 16:18:31	2023231159		3165 SWEET ACRES PL	911 HANG UP
08/17/2023 23:37:07	2023229256		4590 BALER TRAILS DR	CIVIL MATTER
08/17/2023 20:37:06	2023229225		2812 SHELBURNE WAY	PUBLIC SERVICE CALL
08/17/2023 17:44:41	2023229181		FIELDWOOD CIR/GRAMERCY FARMS BLVD	ABANDONED VEHICLE
08/17/2023 10:14:46	2023229072		4560 BALER TRAILS DR	PUBLIC SERVICE CALL
08/16/2023 15:09:03	2023228177		3049 FIELDWOOD CIR	FRAUD
08/15/2023 08:32:06	2023227068		2827 MOSSHIRE CIR	ATTEMPT TO CONTACT
08/15/2023 07:33:06	2023227057		3068 FIELDWOOD CIR	ATTEMPT TO CONTACT
08/14/2023 18:34:11	2023226171	23004882	2823 SHELBURNE WAY	LOST PROPERTY

Call Time	Event ID	Rpt #	Street	Nature
08/13/2023 23:19:39	2023225241		4600 GLENCREST LOOP	REPOSSESSION
08/13/2023 21:55:50	2023225226		2970 HARLOW AVE	RECKLESS DRIVER
08/13/2023 18:37:35	2023225181		2886 HARLOW AVE	SUSPICIOUS INCIDENT
08/13/2023 17:33:48	2023225165		2869 MOSSHIRE CIR	FRAUD FORGERY BY PHONE EMAIL
08/13/2023 17:30:36	2023225164		4559 CALUMET DR	SUSPICIOUS VEHICLE
08/13/2023 17:26:12	2023225161		4619 CALUMET DR	VERBAL DOMESTIC DISTURBANCE
08/11/2023 17:11:44	2023223195		ORCHARD GROVE RD/GRAMERCY FARMS BL	FOUND PERSON
08/11/2023 16:01:21	2023223179		GRAMERCY FARMS BLVD/MOSSHIRE CIR	FOUND PERSON
08/11/2023 15:59:28	2023223178		GRAMERCY FARMS BLVD/MOSSHIRE CIR	DUPLICATE CALL
08/11/2023 12:11:40	2023223110	23004825	2827 MOSSHIRE CIR	WANTED PERSON
08/09/2023 11:01:27	2023221137		2897 FIELDWOOD CIR	911 OPEN LINE
08/09/2023 07:15:58	2023221073		3028 LAKES CREST AVE	DISTURBANCE
08/09/2023 06:29:04	2023221064		3028 LAKES CREST AVE	PAST THREAT
08/08/2023 13:52:35	2023220138		2892 MOSSHIRE CIR	911 HANG UP
08/07/2023 17:04:41	2023219167		2827 MOSSHIRE CIR	SUPPLEMENTAL GENERAL CASE INFO
08/05/2023 13:19:07	2023217136		2822 WAGON WHEEL TRL	RESIDENTIAL BURGLARY ALARM
08/04/2023 19:51:00	2023216258	23004664	2827 MOSSHIRE CIR	PAST DOMESTIC DISTURBANCE
08/03/2023 22:00:00	2023215283		FIELDWOOD CIR/GRAMERCY FARMS BLVD	EXTRA PATROL
08/02/2023 22:00:16	2023214308		FIELDWOOD CIR/GRAMERCY FARMS BLVD	EXTRA PATROL
08/02/2023 20:31:07	2023214283		2847 SHELBURNE WAY	911 HANG UP
08/01/2023 22:00:13	2023213309		FIELDWOOD CIR/GRAMERCY FARMS BLVD	EXTRA PATROL
08/01/2023 14:38:39	2023213195		2814 WAGON WHEEL TRL	911 HANG UP
07/31/2023 22:00:15	2023212262		FIELDWOOD CIR/GRAMERCY FARMS BLVD	EXTRA PATROL
07/30/2023 22:00:14	2023211245		FIELDWOOD CIR/GRAMERCY FARMS BLVD	EXTRA PATROL
07/30/2023 14:30:52	2023211174		4521 BALER TRAILS DR	911 OPEN LINE
07/29/2023 22:00:18	2023210227		FIELDWOOD CIR/GRAMERCY FARMS BLVD	EXTRA PATROL
07/29/2023 12:29:08	2023210082		3151 SWEET ACRES PL	VERBAL FAMILY DISTURBANCE
07/28/2023 22:00:01	2023209304		FIELDWOOD CIR/GRAMERCY FARMS BLVD	EXTRA PATROL
07/28/2023 13:42:02	2023209212		2822 SHELBURNE WAY	911 OPEN LINE
07/28/2023 10:06:30	2023209150		3036 LAKES CREST AVE	RESIDENTIAL BURGLARY ALARM
07/28/2023 02:51:59	2023209048		3015 FIELDWOOD CIR	INTELLIGENCE LED POLICING
07/28/2023 02:30:52	2023209039		3058 FIELDWOOD CIR	911 HANG UP
07/27/2023 23:11:19	2023208243		VALLEY CREEK DR/SHELBURNE WAY	INTELLIGENCE LED POLICING
07/27/2023 22:00:01	2023208233		FIELDWOOD CIR/GRAMERCY FARMS BLVD	EXTRA PATROL
07/26/2023 22:00:03	2023207246		FIELDWOOD CIR/GRAMERCY FARMS BLVD	EXTRA PATROL

Call Time	Event ID	Rpt #	Street	Nature
07/26/2023 02:51:59	2023207037		4717 GLENCREST LOOP	REPOSSESSION
07/26/2023 00:00:14	2023207001		2801 SHELBURNE WAY	INTELLIGENCE LED POLICING
07/25/2023 22:00:11	2023206238		FIELDWOOD CIR/GRAMERCY FARMS BLVD	EXTRA PATROL
07/25/2023 16:27:45	2023206189		3151 SWEET ACRES PL	CITIZEN ASSIST
07/25/2023 00:23:16	2023206013		2922 FIELDWOOD CIR	INTELLIGENCE LED POLICING
07/24/2023 22:00:17	2023205210		FIELDWOOD CIR/GRAMERCY FARMS BLVD	EXTRA PATROL
07/24/2023 04:20:18	2023205029		4481 BALER TRAILS DR	CITIZEN ASSIST
07/23/2023 22:00:11	2023204179		FIELDWOOD CIR/GRAMERCY FARMS BLVD	EXTRA PATROL
07/22/2023 22:29:48	2023203204		2826-BLK VALLEY CREEK DR	INTELLIGENCE LED POLICING
07/22/2023 22:00:05	2023203199		FIELDWOOD CIR/GRAMERCY FARMS BLVD	EXTRA PATROL
07/21/2023 22:00:01	2023202246		FIELDWOOD CIR/GRAMERCY FARMS BLVD	EXTRA PATROL
07/21/2023 21:41:30	2023202243		2918 FIELDWOOD CIR	SUPPLEMENTAL GENERAL CASE INFO
07/21/2023 21:24:20	2023202239		2807 MOSSHIRE CIR	INTELLIGENCE LED POLICING
07/21/2023 00:08:22	2023202004		3151 SWEET ACRES PL	JUVENILE PROBLEM
07/20/2023 22:00:18	2023201237		FIELDWOOD CIR/GRAMERCY FARMS BLVD	EXTRA PATROL
07/18/2023 17:39:20	2023199229	23004323	2918 FIELDWOOD CIR	ASSIST OTHER AGENCY NON URGENT
07/18/2023 16:49:49	2023199216		2918 FIELDWOOD CIR	ASSIST OTHER AGENCY NON URGENT
07/17/2023 21:53:36	2023198211	23004307	2806 WAGON WHEEL TRL	LEWD AND LACIVIOUS
07/16/2023 13:41:56	2023197137		2825 SHELBURNE WAY	SUSPICIOUS INCIDENT
07/16/2023 12:33:56	2023197125		2904 IVY STABLE LN	TRAFFIC
07/15/2023 20:04:04	2023196210		4517 BALER TRAILS DR	PUBLIC SERVICE CALL
07/13/2023 18:23:43	2023194198		2891 MOSSHIRE CIR	INTELLIGENCE LED POLICING
07/13/2023 17:42:09	2023194191		2817 MOSSHIRE CIR	911 HANG UP
07/13/2023 13:05:02	2023194130		2833 WAGON WHEEL TRL	911 OPEN LINE
07/11/2023 13:24:01	2023192139		4721 GLENCREST LOOP	911 HANG UP
07/10/2023 11:54:33	2023191145		4608 GLENCREST LOOP	CIVIL MATTER
07/09/2023 13:07:40	2023190099		4633 GLENCREST LOOP	CITIZEN ASSIST
07/08/2023 21:18:43	2023189208		2918 FIELDWOOD CIR	CITIZEN ASSIST
07/07/2023 20:17:55	2023188273		4633 GLENCREST LOOP	CITIZEN ASSIST
07/07/2023 15:09:47	2023188192		4605 CALUMET DR	911 HANG UP
07/06/2023 21:39:05	2023187292		4607 CALUMET DR	DUPLICATE CALL
07/06/2023 21:37:44	2023187291		4607 CALUMET DR	911 HANG UP
07/06/2023 21:28:44	2023187288		4637 GLENCREST LOOP	PUBLIC SERVICE CALL
07/06/2023 12:03:36	2023187137		3060 FIELDWOOD CIR	911 OPEN LINE
07/06/2023 10:09:45	2023187104		3015 FIELDWOOD CIR	911 OPEN LINE

Call Time	Event ID	Rpt #	Street	Nature
07/05/2023 14:50:06	2023186153		4535 ORCHARD GROVE RD	RESIDENTIAL HOLD UP PANIC DURE
07/05/2023 07:52:41	2023186048		3023 FIELDWOOD CIR	INJURED ANIMAL
07/04/2023 13:04:29	2023185098		4619 CALUMET DR	911 HANG UP
07/03/2023 17:27:38	2023184144		3004 LAKES CREST AVE	CUSTODY ISSUE
07/02/2023 07:40:36	2023183025		3082 FIELDWOOD CIR	DUPLICATE CALL
07/02/2023 01:14:34	2023183011		4741 GLENCREST LOOP	OTHER NOISE COMPLAINT
07/01/2023 22:33:53	2023182169	23003992	4545 ORCHARD GROVE RD	TRAFFIC INCIDENT NO INJURY
07/01/2023 12:20:01	2023182080	23003983	4672 GLENCREST LOOP	BATTERY
06/30/2023 21:04:20	2023181233		4535 BALER TRAILS DR	UNWANTED STRAY ANIMAL
06/30/2023 19:49:21	2023181220		3120 LAKES CREST AVE	911 HANG UP
06/30/2023 12:23:04	2023181132		4587 CALUMET DR	KEEP THE PEACE PRE ARRANGED
06/30/2023 08:55:42	2023181084		4562 ORCHARD GROVE RD	THEFT LARCENY JUST OCC
06/29/2023 23:13:57	2023180255	23003960	4587 CALUMET DR	BATTERY
06/29/2023 21:38:54	2023180246		4587 CALUMET DR	DUPLICATE CALL
06/29/2023 21:36:59	2023180245	23003959	4587 CALUMET DR	MENTALLY ILL PERSON
06/28/2023 19:14:57	2023179199		GRAMERCY FARMS BLVD/HARLOW AVE	SUSPICIOUS PERSON
06/28/2023 19:05:35	2023179198		2935 FIELDWOOD CIR	911 HANG UP
06/28/2023 11:25:10	2023179070		4594 GRAMERCY FARMS BLVD	911 HANG UP
06/28/2023 10:50:41	2023179063		4599 CALUMET DR	911 HANG UP
06/26/2023 15:53:05	2023177206		ORCHARD GROVE RD/IVY STABLE LN	RECKLESS DRIVER
06/26/2023 11:58:09	2023177139		2814 WAGON WHEEL TRL	911 HANG UP
06/24/2023 21:14:08	2023175209		SWEET ACRES PL/PLAINVIEW RD	INTELLIGENCE LED POLICING
06/24/2023 20:53:27	2023175203		3118 SWEET ACRES PL	RESIDENTIAL BURGLARY ALARM
06/24/2023 20:21:07	2023175192		4521 ORCHARD GROVE RD	VERBAL DISTURBANCE
06/24/2023 18:21:53	2023175167		2820 WAGON WHEEL TRL	911 HANG UP
06/22/2023 14:46:28	2023173142		4508 BALER TRAILS DR	911 OPEN LINE
06/21/2023 13:33:31	2023172147		3142 SWEET ACRES PL	911 HANG UP
06/21/2023 12:59:32	2023172140		4767 MAPLEWILD LN	SUSPICIOUS INCIDENT
06/19/2023 17:01:30	2023170132		3026 FIELDWOOD CIR	RESIDENTIAL BURGLARY ALARM
06/18/2023 09:48:35	2023169096		4613 GLENCREST LOOP	ATTEMPT TO CONTACT
06/16/2023 09:38:08	2023167098		2895 MOSSHIRE CIR	INTELLIGENCE LED POLICING
06/14/2023 20:21:34	2023165205		2949 FIELDWOOD CIR	PUBLIC SERVICE CALL
06/11/2023 20:57:19	2023162167		2838 WAGON WHEEL TRL	911 HANG UP
06/08/2023 22:06:41	2023159250		2838 WAGON WHEEL TRL	SUPPLEMENTAL OTHER
06/08/2023 02:46:56	2023159032	23003562	2838 WAGON WHEEL TRL	UNWANTED PERSON

Call Time	Event ID	Rpt #	Street	Nature
06/08/2023 02:19:21	2023159030	23003560	2838 WAGON WHEEL TRL	CHILD ABUSE
06/07/2023 16:04:21	2023158206		3056 LAKES CREST AVE	SOLICITOR
06/07/2023 15:52:35	2023158202		4600 HARVEST ROW LN	RESIDENTIAL BURGLARY ALARM
06/07/2023 15:04:50	2023158191		2834 SHELBURNE WAY	SUPPLEMENTAL GENERAL CASE INFO
06/07/2023 11:35:42	2023158123		2804 WAGON WHEEL TRL	911 HANG UP
06/04/2023 11:06:36	2023155116		2947 FIELDWOOD CIR	911 HANG UP
06/04/2023 00:09:31	2023155005		4543 PLAINVIEW RD	OTHER NOISE COMPLAINT
06/03/2023 19:21:47	2023154205		2969 FIELDWOOD CIR	DUPLICATE CALL
06/03/2023 19:21:21	2023154203	23003480	2969 FIELDWOOD CIR	PHYSICAL DOMESTIC DISTURBANCE
06/03/2023 15:21:11	2023154159		2804 WAGON WHEEL TRL	911 HANG UP
06/01/2023 20:53:52	2023152223		4531 ORCHARD GROVE RD	911 HANG UP
05/30/2023 12:47:22	2023150119		2887 HARLOW AVE	911 DISCONNECT CELL
05/30/2023 09:10:07	2023150071		3036 SWEET ACRES PL	911 HANG UP
05/28/2023 13:10:29	2023148097	23003360	4599 CALUMET DR	PHONE THREAT
05/27/2023 13:44:32	2023147112		2904 IVY STABLE LN	RECKLESS ACTIVITY
05/27/2023 13:08:28	2023147106		2815 MOSSHIRE CIR	911 HANG UP
05/27/2023 11:05:18	2023147082		3120 SWEET ACRES PL	RESIDENTIAL BURGLARY ALARM
05/27/2023 01:55:40	2023147019		4540 BALER TRAILS DR	PUBLIC SERVICE CALL
05/26/2023 06:28:40	2023146038	23003325	4506 ORCHARD GROVE RD	PAST HIT AND RUN
05/23/2023 16:38:44	2023143245		4590 BALER TRAILS DR	ASSIST ANOTHER AGENCY
05/23/2023 13:28:46	2023143175		4530 BALER TRAILS DR	PUBLIC SERVICE CALL
05/23/2023 04:48:45	2023143057		4623 CALUMET DR	INTELLIGENCE LED POLICING
05/22/2023 23:33:06	2023142279		2833 SHELBURNE WAY	911 OPEN LINE
05/22/2023 17:41:53	2023142220		2805 SHELBURNE WAY	PARKING COMPLAINT
05/22/2023 12:00:04	2023142112		2925 FIELDWOOD CIR	PUBLIC SERVICE CALL
05/22/2023 00:44:47	2023142005		2819 WAGON WHEEL TRL	PUBLIC SERVICE CALL
05/20/2023 16:42:56	2023140169		3032 SWEET ACRES PL	INJURED ANIMAL
05/19/2023 02:52:01	2023139045		2893 MOSSHIRE CIR	INTELLIGENCE LED POLICING
05/17/2023 14:08:57	2023137133		2971 FIELDWOOD CIR	CITIZEN ASSIST
05/17/2023 11:03:27	2023137084		2971 FIELDWOOD CIR	VIN VERIFICATION
05/17/2023 10:37:12	2023137080		2971 FIELDWOOD CIR	VIN VERIFICATION
05/17/2023 00:00:24	2023137002		3104 SWEET ACRES PL	RESIDENTIAL BURGLARY ALARM
05/16/2023 01:29:37	2023136013		4525 ORCHARD GROVE RD	REPOSSESSION
05/15/2023 09:32:08	2023135101		4583 CALUMET DR	PUBLIC SERVICE CALL
05/14/2023 17:17:36	2023134105		3033 SWEET ACRES PL	911 HANG UP



Call Time	Event ID	Rpt #	Street	Nature
05/13/2023 21:39:00	2023133168		3178 SWEET ACRES PL	911 HANG UP
05/12/2023 18:22:07	2023132203		3015 FIELDWOOD CIR	CIVIL MATTER
05/12/2023 13:40:01	2023132131	23003001	4601 HARVEST ROW LN	CODE VIOLATION
05/11/2023 21:32:47	2023131259		4717 GLENCREST LOOP	RESIDENTIAL HOLD UP PANIC DURE
05/11/2023 18:21:14	2023131220		2970 HARLOW AVE	ON LINE REPORTING
05/09/2023 13:43:04	2023129210		2990 FIELDWOOD CIR	RESIDENTIAL BURGLARY ALARM
05/09/2023 08:07:50	2023129118		4549 BALER TRAILS DR	SUSPICIOUS VEHICLE
05/08/2023 20:14:40	2023128313		2805 MOSSHIRE CIR	PUBLIC SERVICE CALL
05/08/2023 15:07:31	2023128248		4606 CALUMET DR	SUPPLEMENTAL GENERAL CASE INFO
05/08/2023 11:43:07	2023128185		3150 SWEET ACRES PL	CIVIL MATTER
05/07/2023 14:51:32	2023127113		4521 ORCHARD GROVE RD	RECKLESS DRIVER
05/07/2023 11:03:02	2023127081		2945 FIELDWOOD CIR	911 HANG UP
05/06/2023 18:50:29	2023126207		4533 BALER TRAILS DR	VERBAL DISTURBANCE
05/04/2023 23:24:50	2023124286		2830 SHELBURNE WAY	INVESTIGATION SUPPLEMENTAL
05/04/2023 19:56:28	2023124239		4571 PLAINVIEW RD	CITIZEN ASSIST
05/04/2023 18:51:53	2023124229		2951 FIELDWOOD CIR	PARKING COMPLAINT
05/04/2023 18:42:48	2023124225	23002803	2832 SHELBURNE WAY	ASSIST OTHER AGENCY NON URGENT
05/03/2023 14:43:22	2023123152		2940 IVY STABLE LN	ATTEMPT TO CONTACT
05/03/2023 13:12:13	2023123125		3049 FIELDWOOD CIR	PUBLIC RECORDS REQUEST
05/02/2023 17:12:58	2023122187		3096 SWEET ACRES PL	OTHER NOISE COMPLAINT
05/02/2023 16:50:55	2023122183		LAKES CREST AVE/SWEET ACRES PL	OTHER NOISE COMPLAINT
05/02/2023 09:58:50	2023122100		4577 BALER TRAILS DR	SUPPLEMENTAL GENERAL CASE INFO
05/01/2023 13:06:41	2023121106		2834 SHELBURNE WAY	REPOSSESSION
05/01/2023 10:34:59	2023121082		4770 MAPLEWILD LN	911 HANG UP
04/30/2023 14:50:40	2023120128		3023 FIELDWOOD CIR	DANGEROUS ANIMAL
04/28/2023 15:37:30	2023118207		2886 HARLOW AVE	LOST PROPERTY
04/28/2023 14:43:41	2023118175		2853 SHELBURNE WAY	LOST PROPERTY
04/28/2023 11:38:35	2023118126		3032 FIELDWOOD CIR	PAST THEFT
04/28/2023 01:22:53	2023118019	23002640	GRAMERCY FARMS BLVD/MOSSHIRE CIR	SUSPICIOUS VEHICLE
04/25/2023 16:42:19	2023115192		GRAMERCY FARMS BLVD/ORCHARD GROVE	FOUND PROPERTY
04/25/2023 06:00:42	2023115047		3151 SWEET ACRES PL	RESIDENTIAL BURGLARY ALARM
04/23/2023 19:26:16	2023113193	23002531	4621 HARVEST ROW LN	ABUSE DCF
04/22/2023 11:11:31	2023112071		2838 WAGON WHEEL TRL	JUVENILE PROBLEM
04/21/2023 23:30:23	2023111277		4547 PLAINVIEW RD	ATTEMPT TO CONTACT
04/19/2023 20:26:00	2023109206		2850 BROOKDALE LN	911 HANG UP

Call Time	Event ID	Rpt #	Street	Nature
04/19/2023 09:10:43	2023109074		4563 PLAINVIEW RD	RESIDENTIAL BURGLARY ALARM
04/19/2023 02:49:35	2023109030		4661 GLENCREST LOOP	REPOSSESSION
04/15/2023 16:34:59	2023105136		4522 ORCHARD GROVE RD	911 OPEN LINE
04/14/2023 20:16:42	2023104240		4622 HARVEST ROW LN	ASSIST ANOTHER AGENCY
04/14/2023 08:55:27	2023104057		3150 SWEET ACRES PL	CITIZEN ASSIST
04/14/2023 00:00:00	2023104001		2920 FIELDWOOD CIR	REPOSSESSION
04/12/2023 21:00:08	2023102294		FIELDWOOD CIR/GRAMERCY FARMS BLVD	TRAFFIC REQUEST
04/12/2023 02:45:26	2023102030		2848-BLK SHELBURNE WAY	INTELLIGENCE LED POLICING
04/11/2023 21:00:08	2023101274		FIELDWOOD CIR/GRAMERCY FARMS BLVD	TRAFFIC REQUEST
04/11/2023 20:58:15	2023101271		2908 IVY STABLE LN	WEAPONS INCIDENT
04/11/2023 17:19:10	2023101220		4709 GLENCREST LOOP	DUPLICATE CALL
04/11/2023 17:16:49	2023101219		4709 GLENCREST LOOP	DUPLICATE CALL
04/11/2023 17:15:38	2023101218		4709 GLENCREST LOOP	ASSIST ANOTHER AGENCY
04/11/2023 16:51:53	2023101208		2851 HARLOW AVE	PUBLIC SERVICE CALL
04/11/2023 14:51:04	2023101173		4525 ORCHARD GROVE RD	CITIZEN ASSIST
04/10/2023 21:00:12	2023100274		FIELDWOOD CIR/GRAMERCY FARMS BLVD	TRAFFIC REQUEST
04/10/2023 20:21:04	2023100268		3036 FIELDWOOD CIR	911 HANG UP
04/10/2023 16:11:54	2023100209		4599 CALUMET DR	911 HANG UP
04/10/2023 12:51:45	2023100152		4622 HARVEST ROW LN	911 OPEN LINE
04/09/2023 21:51:14	2023099216		3212 SWEET ACRES PL	CIVIL MATTER
04/09/2023 21:00:02	2023099212		FIELDWOOD CIR/GRAMERCY FARMS BLVD	TRAFFIC REQUEST
04/08/2023 21:00:05	2023098237		FIELDWOOD CIR/GRAMERCY FARMS BLVD	TRAFFIC REQUEST
04/08/2023 16:47:01	2023098186		2855 MOSSHIRE CIR	911 HANG UP
04/07/2023 21:00:02	2023097234		FIELDWOOD CIR/GRAMERCY FARMS BLVD	TRAFFIC REQUEST
04/06/2023 21:00:00	2023096272		FIELDWOOD CIR/GRAMERCY FARMS BLVD	TRAFFIC REQUEST
04/05/2023 21:00:13	2023095302		FIELDWOOD CIR/GRAMERCY FARMS BLVD	TRAFFIC REQUEST
04/05/2023 19:37:05	2023095284		2935 FIELDWOOD CIR	TRAFFIC REQUEST
04/01/2023 13:58:37	2023091127		2939 FIELDWOOD CIR	BREATHING PROBLEMS INEFFECTV
04/01/2023 13:57:58	2023091126		2939 FIELDWOOD CIR	DUPLICATE CALL
04/01/2023 08:39:03	2023091058		4574 CALUMET DR	911 DISCONNECT CELL
03/31/2023 20:00:57	2023090254		4582 BALER TRAILS DR	911 HANG UP
03/31/2023 04:50:57	2023090082		4497 BALER TRAILS DR	SUSPICIOUS VEHICLE
03/30/2023 19:55:11	2023089281		2875 HARLOW AVE	TRAFFIC
03/30/2023 15:59:19	2023089231		3004 FIELDWOOD CIR	LOST/FOUND PROPERTY
03/30/2023 15:48:15	2023089227		3004 FIELDWOOD CIR	PUBLIC RECORDS REQUEST

Call Time	Event ID	Rpt #	Street	Nature
03/30/2023 15:04:05	2023089215		GRAMERCY FARMS BLVD/LAKES CREST AV	TRAFFIC STOP
03/29/2023 00:41:32	2023088007		2851 HARLOW AVE	REPOSSESSION
03/28/2023 21:28:43	2023087273		4571 BALER TRAILS DR	PUBLIC SERVICE CALL
03/28/2023 19:07:04	2023087244		2912 FIELDWOOD CIR	INTELLIGENCE LED POLICING
03/28/2023 16:52:12	2023087217		2859 HARLOW AVE	BARKING DOG
03/28/2023 11:31:48	2023087119		2859 HARLOW AVE	CITIZEN ASSIST
03/27/2023 18:30:56	2023086246		3160 SWEET ACRES PL	RESIDENTIAL BURGLARY ALARM
03/26/2023 17:10:27	2023085193		4544 ORCHARD GROVE RD	911 HANG UP
03/26/2023 11:31:08	2023085117		2859 HARLOW AVE	CITIZEN ASSIST
03/26/2023 10:59:28	2023085111		2859 HARLOW AVE	TRAFFIC
03/25/2023 11:07:01	2023084123		4566 ORCHARD GROVE RD	911 HANG UP
03/25/2023 02:52:11	2023084029		2908 IVY STABLE LN	SUSPICIOUS PERSON
03/24/2023 23:45:31	2023083338		4580 BALER TRAILS DR	TEST CALL
03/24/2023 19:56:12	2023083285		ORCHARD GROVE RD/IVY STABLE LN	MINOR TRAFFIC VIOLATION COMPL
03/24/2023 18:36:45	2023083269		2839 WAGON WHEEL TRL	UNWANTED PERSON
03/24/2023 13:12:52	2023083187		4584 BALER TRAILS DR	SUSPICIOUS INCIDENT
03/24/2023 12:14:04	2023083168		4684 GLENCREST LOOP	INJURED ANIMAL
03/23/2023 16:09:04	2023082159	23001820	3157 SWEET ACRES PL	FRAUD
03/23/2023 13:30:20	2023082131		3157 SWEET ACRES PL	SUSPICIOUS INCIDENT
03/21/2023 06:25:34	2023080038		2916 FIELDWOOD CIR	REPOSSESSION
03/19/2023 18:42:05	2023078174		4593 BALER TRAILS DR	INTELLIGENCE LED POLICING
03/19/2023 18:39:40	2023078173		2851 SHELBURNE WAY	INTELLIGENCE LED POLICING
03/19/2023 18:37:05	2023078172		2804 MOSSHIRE CIR	INTELLIGENCE LED POLICING
03/19/2023 18:33:54	2023078171		2915 FIELDWOOD CIR	INTELLIGENCE LED POLICING
03/19/2023 12:00:12	2023078108		2831 WAGON WHEEL TRL	EXTRA PATROL REQUEST
03/18/2023 14:36:40	2023077141		4599 CALUMET DR	CIVIL MATTER
03/18/2023 12:00:08	2023077102		2831 WAGON WHEEL TRL	EXTRA PATROL REQUEST
03/17/2023 12:00:00	2023076144		2831 WAGON WHEEL TRL	EXTRA PATROL REQUEST
03/17/2023 07:19:23	2023076070		4497 BALER TRAILS DR	INTELLIGENCE LED POLICING
03/16/2023 12:00:16	2023075099		2831 WAGON WHEEL TRL	EXTRA PATROL REQUEST
03/15/2023 12:00:07	2023074132		2831 WAGON WHEEL TRL	EXTRA PATROL REQUEST
03/14/2023 22:06:46	2023073203		3052 LAKES CREST AVE	DISTURBANCE
03/14/2023 18:31:24	2023073168		4591 BALER TRAILS DR	INTELLIGENCE LED POLICING
03/14/2023 18:29:59	2023073167		2857 SHELBURNE WAY	INTELLIGENCE LED POLICING
03/14/2023 18:27:39	2023073165		2804 MOSSHIRE CIR	INTELLIGENCE LED POLICING

Call Time	Event ID	Rpt #	Street	Nature
03/14/2023 18:25:39	2023073164		3090 FIELDWOOD CIR	INTELLIGENCE LED POLICING
03/14/2023 12:00:19	2023073086		2831 WAGON WHEEL TRL	EXTRA PATROL REQUEST
03/13/2023 16:22:21	2023072238		4593 BALER TRAILS DR	INTELLIGENCE LED POLICING
03/13/2023 16:20:45	2023072236		2807 MOSSHIRE CIR	INTELLIGENCE LED POLICING
03/13/2023 12:00:18	2023072179		2831 WAGON WHEEL TRL	EXTRA PATROL REQUEST
03/12/2023 20:30:51	2023071175		3096 LAKES CREST AVE	911 HANG UP
03/12/2023 12:00:11	2023071083		2831 WAGON WHEEL TRL	EXTRA PATROL REQUEST
03/11/2023 18:42:32	2023070270		3120 LAKES CREST AVE	911 OPEN LINE
03/11/2023 18:13:27	2023070266		2831 WAGON WHEEL TRL	EXTRA PATROL REQUEST
03/09/2023 15:11:00	2023068167		BALER TRAILS DR/GRAMERCY FARMS BLV	PHYSICAL DISTURBANCE
03/08/2023 10:53:01	2023067140		4597 BALER TRAILS DR	ASSIST OTHER AGENCY NON URGENT
03/05/2023 00:11:26	2023064001		4514 CALUMET DR	SUSPICIOUS PERSON
03/04/2023 21:50:56	2023063232	23001457	4509 BALER TRAILS DR	MENTALLY ILL PERSON
03/02/2023 13:31:09	2023061212		4548 ORCHARD GROVE RD	VIOLATION OF ORDER
03/02/2023 06:24:49	2023061111		4500 ORCHARD GROVE RD	911 HANG UP
03/01/2023 08:33:01	2023060077		3108 SWEET ACRES PL	PAST TRAFFIC VIOLATION COMPLAI
02/28/2023 13:44:18	2023059109		4504 ORCHARD GROVE RD	INVESTIGATION SUPPLEMENTAL
02/28/2023 11:04:22	2023059078	23001331	4504 ORCHARD GROVE RD	CHILD ABUSE
02/27/2023 22:51:32	2023058294		4522 CALUMET DR	CHECK WELFARE
02/26/2023 12:14:14	2023057123		GRAMERCY FARMS BLVD/MOSSHIRE CIR	TRAFFIC STOP
02/25/2023 12:37:10	2023056119		2938 HARLOW AVE	PUBLIC SERVICE CALL
02/24/2023 14:34:11	2023055151		2816 WAGON WHEEL TRL	PUBLIC SERVICE CALL
02/24/2023 13:30:26	2023055133		4595 PLAINVIEW RD	911 HANG UP
02/23/2023 16:19:57	2023054196		3044 LAKES CREST AVE	911 HANG UP
02/23/2023 15:17:05	2023054174	23001225	3038 FIELDWOOD CIR	CHILD ABUSE
02/23/2023 14:17:02	2023054149		4540 BALER TRAILS DR	SUSPICIOUS INCIDENT
02/23/2023 13:31:13	2023054136		3038 FIELDWOOD CIR	DUPLICATE CALL
02/23/2023 13:22:07	2023054129		3038 FIELDWOOD CIR	DUPLICATE CALL
02/23/2023 13:17:46	2023054127		2859 SHELBURNE WAY	INTELLIGENCE LED POLICING
02/21/2023 19:44:45	2023052250		4542 CALUMET DR	MENTALLY ILL PERSON
02/20/2023 22:51:53	2023051256		4599 PLAINVIEW RD	PAST SUSPICIOUS PERSON
02/20/2023 19:47:07	2023051231		4572 BALER TRAILS DR	911 OPEN LINE
02/19/2023 20:05:14	2023050190		4569 BALER TRAILS DR	ATTEMPT TO CONTACT
02/19/2023 11:40:16	2023050095		IVY STABLE LN/GRAMERCY FARMS BLVD	RECKLESS DRIVER
02/19/2023 02:39:08	2023050027		4530 BALER TRAILS DR	ASSIST ANOTHER AGENCY

Call Time	Event ID	Rpt #	Street	Nature
02/18/2023 22:06:16	2023049206		3090 FIELDWOOD CIR	INTELLIGENCE LED POLICING
02/17/2023 13:40:34	2023048132		2934 FIELDWOOD CIR	DUPLICATE CALL
02/16/2023 18:30:45	2023047243		SHELBURNE WAY/VALLEY CREEK DR	SUPPLEMENTAL GENERAL CASE INFO
02/15/2023 21:18:19	2023046305		3128 SWEET ACRES PL	CIVIL MATTER
02/14/2023 19:40:14	2023045228		2957 FIELDWOOD CIR	OTHER NOISE COMPLAINT
02/13/2023 19:48:19	2023044379		3040 LAKES CREST AVE	911 HANG UP
02/13/2023 16:51:49	2023044331		2950 HARLOW AVE	SUSPICIOUS INCIDENT
02/12/2023 18:35:24	2023043221		4542 CALUMET DR	JUVENILE PROBLEM
02/12/2023 17:09:25	2023043207		ORCHARD GROVE RD/GRAMERCY FARMS BL	RECKLESS ACTIVITY
02/12/2023 05:50:05	2023043100		4597 BALER TRAILS DR	ASSIST ANOTHER AGENCY
02/11/2023 10:17:25	2023042167		4535 CALUMET DR	ASSIST ANOTHER AGENCY
02/10/2023 14:53:38	2023041132		4477 BALER TRAILS DR	PUBLIC SERVICE CALL
02/10/2023 12:22:51	2023041099		3044 FIELDWOOD CIR	INVESTIGATION SUPPLEMENTAL
02/10/2023 08:52:39	2023041056		2932 FIELDWOOD CIR	MISCELLANEOUS NON URGENT MSG
02/09/2023 20:14:31	2023040288		4729 GLENCREST LOOP	911 HANG UP
02/08/2023 08:29:06	2023039121	23000869	3044 FIELDWOOD CIR	ACCIDENT NO INJURIES
02/06/2023 22:09:09	2023037281	23000826	4548 ORCHARD GROVE RD	BATTERY
02/06/2023 10:05:20	2023037088		2903 HARLOW AVE	RESIDENTIAL BURGLARY ALARM
02/04/2023 16:50:15	2023035190		3073 LAKES CREST AVE	CIVIL MATTER
02/04/2023 10:58:49	2023035131		2849 SHELBURNE WAY	ASSIST OTHER AGENCY NON URGENT
02/03/2023 21:17:56	2023034275		4590 BALER TRAILS DR	INTELLIGENCE LED POLICING
02/03/2023 21:04:46	2023034271		2859 SHELBURNE WAY	INTELLIGENCE LED POLICING
02/03/2023 21:01:49	2023034269		2895 MOSSHIRE CIR	INTELLIGENCE LED POLICING
02/03/2023 20:59:08	2023034268		2900 FIELDWOOD CIR	INTELLIGENCE LED POLICING
02/02/2023 20:41:31	2023033263		4615 CALUMET DR	LOST PROPERTY
02/02/2023 12:47:05	2023033146		2849 SHELBURNE WAY	UNWANTED PERSON
02/01/2023 20:02:54	2023032243		2849 SHELBURNE WAY	KEEP THE PEACE
01/31/2023 15:53:33	2023031178		2827 MOSSHIRE CIR	911 HANG UP
01/31/2023 07:53:14	2023031046		2815 MOSSHIRE CIR	REPOSSESSION
01/29/2023 22:18:43	2023029241		4560 ORCHARD GROVE RD	OTHER NOISE COMPLAINT
01/29/2023 11:27:31	2023029127		3058 FIELDWOOD CIR	911 OPEN LINE
01/29/2023 02:13:05	2023029029	23000591	GRAMERCY FARMS BLVD/SHELBURNE WAY	TRAFFIC INCIDENT NO INJURY
01/28/2023 12:30:32	2023028127	23000579	2849 SHELBURNE WAY	PHYSICAL DISTURBANCE
01/27/2023 11:35:23	2023027149		2906 FIELDWOOD CIR	CHECK WELFARE
01/26/2023 07:58:35	2023026087		2814 WAGON WHEEL TRL	CITIZEN ASSIST

Call Time	Event ID	Rpt #	Street	Nature
01/25/2023 12:40:02	2023025187		2847 SHELBURNE WAY	911 HANG UP
01/25/2023 11:52:59	2023025176		SWEET ACRES PL/PLAINVIEW RD	TRAFFIC
01/25/2023 11:50:22	2023025174		SWEET ACRES PL/PLAINVIEW RD	TRAFFIC
01/25/2023 11:16:44	2023025160		3096 SWEET ACRES PL	TRAFFIC
01/24/2023 10:18:18	2023024161		2970 FIELDWOOD CIR	RESIDENTIAL BURGLARY ALARM
01/24/2023 02:47:07	2023024043		4500 ORCHARD GROVE RD	911 HANG UP
01/23/2023 08:15:42	2023023056		3190 SWEET ACRES PL	CIVIL MATTER
01/22/2023 19:16:15	2023022158		3025 FIELDWOOD CIR	911 HANG UP
01/19/2023 14:37:21	2023019216		4561 BALER TRAILS DR	911 HANG UP
01/18/2023 09:16:37	2023018088		4510 BALER TRAILS DR	VERBAL DOMESTIC DISTURBANCE
01/16/2023 13:42:52	2023016115		3024 LAKES CREST AVE	INVESTIGATION SUPPLEMENTAL
01/15/2023 18:23:17	2023015154		3082 FIELDWOOD CIR	911 OPEN LINE
01/14/2023 20:00:21	2023014166		4591 CALUMET DR	911 OPEN LINE
01/14/2023 15:11:24	2023014119		2849 SHELBURNE WAY	SUSPICIOUS INCIDENT
01/10/2023 04:25:19	2023010045		2803 WAGON WHEEL TRL	REPOSSESSION
01/09/2023 16:48:07	2023009204		3100 SWEET ACRES PL	REPOSSESSION
01/09/2023 09:01:55	2023009072		3024 LAKES CREST AVE	SUPPLEMENTAL GENERAL CASE INFO
01/06/2023 18:42:24	2023006205		3081 SWEET ACRES PL	CHECK WELFARE
01/06/2023 14:20:30	2023006137		4590 BALER TRAILS DR	CIVIL MATTER
01/04/2023 17:30:55	2023004241		3049 FIELDWOOD CIR	CIVIL MATTER
01/03/2023 18:40:16	2023003262		4597 BALER TRAILS DR	DUPLICATE CALL
01/03/2023 16:55:51	2023003239		4597 BALER TRAILS DR	ANIMAL ATTACK
01/03/2023 10:54:54	2023003117		4717 GLENCREST LOOP	RESIDENTIAL BURGLARY ALARM
01/01/2023 18:46:58	2023001159		2827 MOSSHIRE CIR	PUBLIC SERVICE CALL
01/01/2023 18:37:20	2023001158		2831 WAGON WHEEL TRL	INVESTIGATION SUPPLEMENTAL
01/01/2023 17:42:11	2023001149		3128 SWEET ACRES PL	911 HANG UP

**TAB 4**

OnSight Industries, LLC  
900 Central Park Dr  
Sanford FL 32771

**Written By:**

**Date:** 10/15/2023:

**Project Name:** NO FISHING SIGN

407-830-8861

**Bill To:**

GRAMERCY FARMS MASTER HOA CDD  
3434 Colwell avenue  
Suite 200  
Tampa FL 33614

**Location:**

GRAMERCY FARMS MASTER HOA CDD  
3434 Colwell avenue  
Suite 200  
Tampa FL 33614

Line	Item	U/M	Price Each	Qty	Total
2	LABOR/CUSTOMER PICK-UP	EA	0.00000	1.000	0.00
3	ITEM-SIGNAGE / DISPLAY- M000989	EA	134.55000	3.000	403.65

S/S NO TRESPASSING SIGN

SIGNAGE / DISPLAY IJ180 VINYL SIGN FACE ONLY TO 3MM DIBOND CUSTOM  
24X43

<b>Pre-Tax Total:</b>	403.65
<b>Sales Tax:</b>	30.27
<b>Total:</b>	433.92

### Terms and Conditions:

- All agreements are contingent upon delays and material cost increases beyond our control. Manufacturing cost increases incurred after quotation and prior to a work order being submitted to production will be passed through to the customer. In this scenario, the project will be required for customer approval. - Pricing in this proposal is subject to acceptance within 14 days and is void thereafter. - Depending upon the agreed credit terms, a deposit may be required before work is to commence. - If a deposit is to be paid by credit card, you authorize OnSight Industries, LLC to charge 50% of the total project cost upfront and the balance of the project upon completion. - Any labor and installation pricing is approximate and subject to change based upon actual time incurred. - Delivery/installation postponement will result in the client being progress billed for completed product. At this time, title for the product will transfer to the client. Client agrees to pay progress bill invoice upon receipt. Product will be warehoused until the client is ready for installation, at which time installation labor will be invoiced upon completion. Product that is warehoused for over 6 months will be assessed a \$100/month/pallet storage fee beginning on the 7th month. - Sales tax is estimated and subject to change based upon the actual rate at time of invoicing. - Unless otherwise noted, client assumes all responsibility for permitting and utility locator services as necessary. - Customer is responsible for variations from customer supplied architectural drawings & hardscapes. - Signature on this proposal constitutes approval from the client on supplied artwork/graphics. - Any credit balance(s) resulting from overpayment that remains on a credit account over 30 days will be applied to the oldest invoice(s) or to upcoming active order(s) and reflected on the following month's statement. - Invoices are due upon receipt. Any unpaid invoices are subject to late fees equal to 1.5% of the balance due per month (18% per year), collection fees and/or court costs.

### Proposal Acceptance:

The above prices, specifications and conditions are hereby accepted. OnSight Industries, LLC is authorized to proceed with the project as stated. Payment will be made as outlined above.

\_\_\_\_\_  
Signature

\_\_\_\_\_  
Name

\_\_\_\_\_  
Date



**S/S No Trespassing Sign**  
Qty 3  
24" x 43"  
Digital Print (IJ180) w/ Gloss Lam  
3mm Dibond  
3mm Black Dibond Backer  
FOR SCREWLESS FACE



**TAB 5**



Contractor	Contact	Proposal Amount	Notes
Finn Outdoor	Robb	\$500	Phase 1 - Location 1
Finn Outdoor		\$2,050	Phase 5 - Location 1-2
Finn Outdoor		\$36,350	Phase 6 - Location 1-19
Finn Outdoor		\$2,900	Phase 8 - Location 1
<b>Total - SFWMD O and M Review Maintenance</b>		<b>\$41,800</b>	

# ESTIMATE

**Finn Outdoor**  
730 20th Ave N  
Saint Petersburg, FL 33704

robb@finnoutdoor.com  
(813)957-6075



## Gramercy Farms CDD

**Bill to**  
Gramercy Farms CDD

**Ship to**  
Gramercy Farms CDD

### Estimate details

Estimate no.: 2074  
Estimate date: 09/27/2023

Product or service		Amount
1. <b>Erosion/Pond Bank Restoration</b>	1 unit × \$500.00	\$500.00
Phase 1, Location 1 -- Fill minimum of 6" over exposed pipe and install sod to stabilize		
	<b>Total</b>	<b>\$500.00</b>



May 16<sup>th</sup>, 2023

Stantec visited Gramercy Farms on Monday May 16<sup>th</sup>, 2023 to review ponds associated with SFWMD Operation and Maintenance Phase 1 due for renewal. Some of the items reviewed during in our inspection include, ensuring drainage structures are free of defects and functioning as intended, pond banks are graded correctly and do not have erosion present, and vegetation both within the ponds and beyond the top of bank do not inhibit the functionality of the overall pond system. We have provided location maps and photographic documentation below with recommendations for repairs, to ensure the ponds continue to function as designed.

Vasili Kostakis

Project Engineer

Cardno Now Stantec

(727) 431-1528

Vasili.kostakis@Cardno.com





Location 1

KB Home Graneray Farms

Fieldwood Cir  
CoatDesigns

HP Home Maintenance Solutions  
Valley Creek Dr

Harlow Ave

Graneray Farm Boulevard

Messite Cir

Graneray Farms Blvd

Shelburne Way

Harvest Row Ln

met Dr

Harlow Ave

ry Ave

Harlow Ave

May 16<sup>th</sup>, 2023

**Location 1:** Exposed pipe going into control structure place fill dirt a minimum of 6" over exposed pipe. All disturbed areas are to be sodded to match existing.





# ESTIMATE

**Finn Outdoor**  
730 20th Ave N  
Saint Petersburg, FL 33704

robb@finnoutdoor.com  
(813)957-6075



## Gramercy Farms CDD

**Bill to**  
Gramercy Farms CDD

**Ship to**  
Gramercy Farms CDD

### Estimate details

Estimate no.: 2075  
Estimate date: 09/27/2023

#	Date	Product or service	SKU	Qty	Rate	Amount
1.		<b>O and M Items</b> Phase 5, Location 1 -- Fill minimum of 6" over exposed pipe, Bahia sod to stabilize		1	\$750.00	\$750.00
2.		<b>O and M Items</b> Phase 5, Location 2 -- Brush cut all vegetation within the length of the highlighted swale, remove any larger or woody materials for offsite disposal.		1	\$1,300.00	\$1,300.00
					<b>Total</b>	<b>\$2,050.00</b>





May 16<sup>th</sup>, 2023

Stantec visited Gramercy Farms on Tuesday May 16<sup>th</sup>, 2023 to review ponds associated with SFWMD Operation and Maintenance Phase 5 due for renewal. Some of the items reviewed during in our inspection include, ensuring drainage structures are free of defects and functioning as intended, pond banks are graded correctly and do not have erosion present, and vegetation both within the ponds and beyond the top of bank do not inhibit the functionality of the overall pond system. We have provided location maps and photographic documentation below with recommendations for repairs, to ensure the ponds continue to function as designed.

Vasili Kostakis

Project Engineer

Stantec

(727) 431-1528

Vasili.kostakis@Stantec.com

Old Hickory Tree Rd

KB Home Gramercy Farms

Masshire Cir

Gramercy Farms Blvd

Location 2

Location 1

Shelburne

euvard



May 16<sup>th</sup>, 2023

**Location 1:** Exposed pipe going into control structure. Place minimum of 6" of fill over the pipe and sod all disturbed areas. See below for additional information.



**Location 2:** Swale has overgrown vegetation restricting the flow of water. Cut the grass to allow water to flow properly through the swale.



# ESTIMATE

**Finn Outdoor**  
730 20th Ave N  
Saint Petersburg, FL 33704

robb@finnoutdoor.com  
(813)957-6075



## Gramercy Farms CDD

**Bill to**  
Gramercy Farms CDD

**Ship to**  
Gramercy Farms CDD

### Estimate details

Estimate no.: 2076  
Estimate date: 09/27/2023

#	Date	Product or service	SKU	Qty	Rate	Amount
1.		<b>O and M Items</b> Phase 6, Location 1 -- Fill, grade, and sod disturbed areas from tire ruts		1	\$600.00	\$600.00
2.		<b>O and M Items</b> Phase 6, Location 2 -- Restore approximately 20' of eroded pond bank using fill and geotextile fabric method as detailed		1	\$2,900.00	\$2,900.00
3.		<b>O and M Items</b> Phase 6, Location 3 -- Replace missing grate on control structure		1	\$1,600.00	\$1,600.00
4.		<b>O and M Items</b> Phase 6, Location 4 -- Clear vegetation a minimum of 5' around structure. Fill void next to structure and sod all disturbed areas.		1	\$800.00	\$800.00
5.		<b>O and M Items</b> Phase 6, Location 5 -- Replace missing grate on control structure		1	\$1,600.00	\$1,600.00
6.		<b>O and M Items</b> Phase 6, Location 6 -- Fill, grade, and sod disturbed areas from tire ruts		1	\$600.00	\$600.00
7.		<b>O and M Items</b> Phase 6, Location 7 -- Fill, grade, and sod disturbed areas from tire ruts		1	\$800.00	\$800.00
8.		<b>O and M Items</b> Phase 6, Location 8 -- Remove logs from pond bank		1	\$250.00	\$250.00
9.		<b>O and M Items</b> Phase 6, Location 9 -- Replace missing grate on control structure; Place a minimum of 6" of compacted fill over and around the eroded area. Remove overgrown vegetation from around flared end section. Sod all disturbed areas		1	\$2,400.00	\$2,400.00
10.		<b>O and M Items</b>		1	\$750.00	\$750.00

Phase 6, Location 10 -- Fill and compact eroding area, sod all disturbed areas

11.	<b>O and M Items</b> Phase 6, Location 11 -- Compact #57 stone under and around pipe joint. Place rip rap extending 2' out from the pipe to deter erosion under the existing pipe. Sod all disturbed areas.	1	\$1,900.00	\$1,900.00
12.	<b>O and M Items</b> Phase 6, Location 12 -- Restore approximately 30' of eroded pond bank using fill and geotextile fabric method as detailed	1	\$3,800.00	\$3,800.00
13.	<b>O and M Items</b> Phase 6, Location 13 -- Restore approximately 30' of eroded pond bank using fill and geotextile fabric method as detailed	1	\$3,800.00	\$3,800.00
14.	<b>O and M Items</b> Phase 6, Location 14 -- Restore approximately 50' of eroded pond bank using fill and geotextile fabric method as detailed	1	\$5,600.00	\$5,600.00
15.	<b>O and M Items</b> Phase 6, Location 15 -- Phase 6, Location 9 -- Replace missing grate on control structure; Remove vegetation around outfall structure 5' around.	1	\$2,350.00	\$2,350.00
16.	<b>O and M Items</b> Phase 6, Location 16 -- Fill, grade, and sod disturbed areas from tire ruts	1	\$1,400.00	\$1,400.00
17.	<b>O and M Items</b> Phase 6, Location 17 -- Sod to match surrounding grades	1	\$300.00	\$300.00
18.	<b>O and M Items</b> Phase 6, Location 18 -- Remove vegetation 5' minimum around existing control structure.	1	\$600.00	\$600.00
19.	<b>O and M Items</b> Phase 6, Location 19 -- Repair eroded areas around control structure with rip rap to conform with rip rap repair detail included in report. All disturbed areas are to be sodded	1	\$4,300.00	\$4,300.00
			<b>Total</b>	<b>\$36,350.00</b>



May 16<sup>th</sup>, 2023

Stantec visited Gramercy Farms on Tuesday May 16<sup>th</sup>, 2023 to review ponds associated with SFWMD Operation and Maintenance Phase 6 due for renewal. Some of the items reviewed during in our inspection include, ensuring drainage structures are free of defects and functioning as intended, pond banks are graded correctly and do not have erosion present, and vegetation both within the ponds and beyond the top of bank do not inhibit the functionality of the overall pond system. We have provided location maps and photographic documentation below with recommendations for repairs, to ensure the ponds continue to function as designed.

Vasili Kostakis

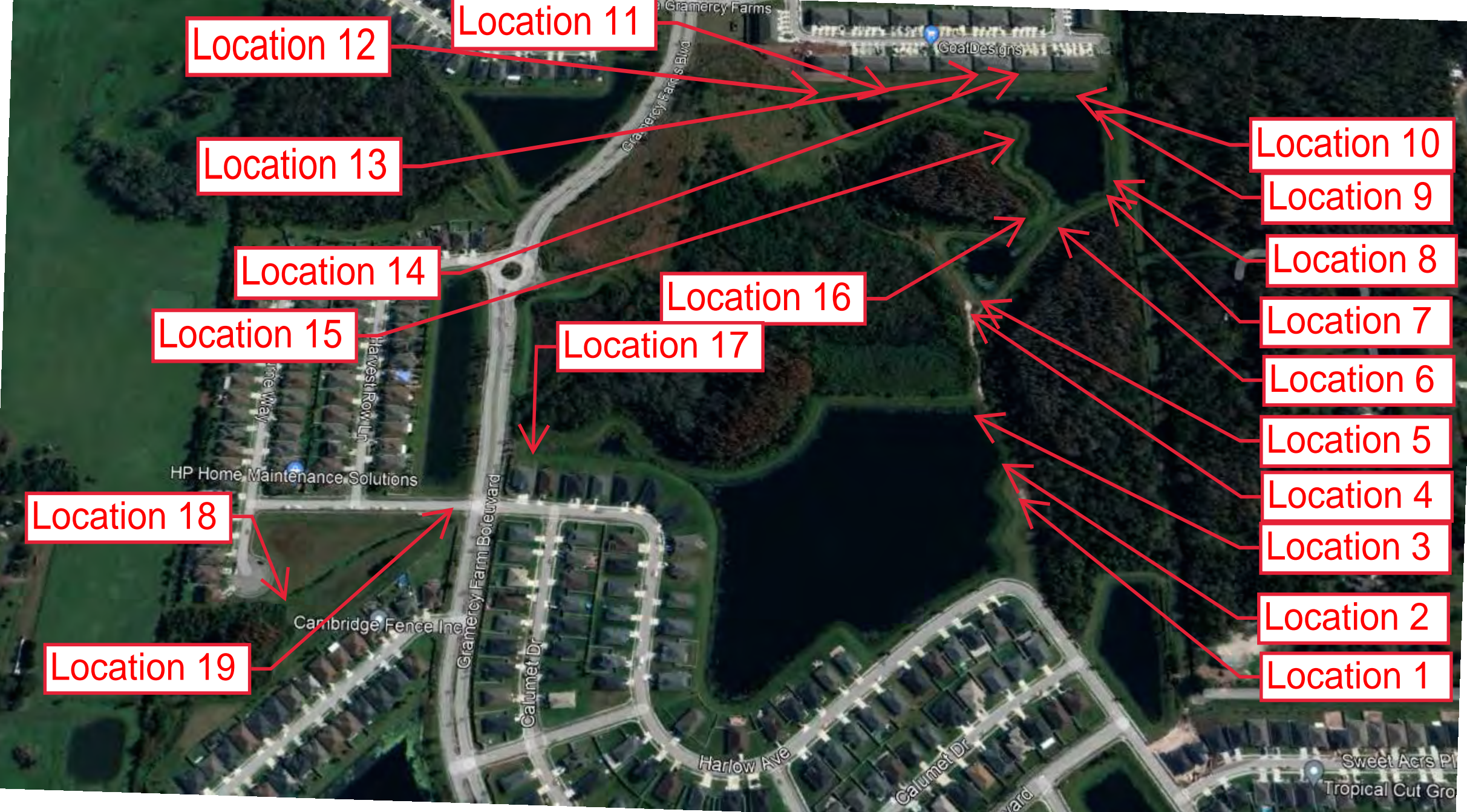
Project Engineer

Stantec

(727) 431-1528

Vasili.kostakis@Stantec.com





Location 12

Location 11

Location 13

Location 14

Location 15

Location 18

Location 19

Location 17

Location 16

Location 10

Location 9

Location 8

Location 7

Location 6

Location 5

Location 4

Location 3

Location 2

Location 1



May 16<sup>th</sup>, 2023

**Location 1:** Due to motorised vehicles driving on the pond banks there are ruts on the pond bank use fill dirt and sod all disturbed areas.



**Location 2:** Erosion present along pond bank. Based on location and historical photographic imagery, erosion appears to have been caused by surface water runoff and fluctuating water levels over a period of time. See pond erosion detail page for recommended repair. Refer to key map for location details.





May 16<sup>th</sup>, 2023

**Location 3:** Control structure grate missing replace grate.



**Location 4:** Clear vegetation a minimum of 5' around structure. Fill void next to structure and sod all disturbed areas.



May 16<sup>th</sup>, 2023

**Location 5:** Control structure grate missing replace grate.



**Location 6:** Due to motorised vehicles driving on the pond banks there are ruts on the pond bank use fill dirt and sod all disturbed areas.





May 16<sup>th</sup>, 2023

**Location 7:** Due to motorised vehicles driving on the pond banks there are ruts on the pond bank use fill dirt and sod all disturbed areas.



**Location 8:** Remove logs from pond bank.



May 16<sup>th</sup>, 2023

**Location 9:** Missing grate on control structure and erosion exposing control structure pipe. Place a minimum of 6" of compacted fill over and around the eroded area. Remove overgrown vegetation from around flared end section. Sod all disturbed areas.





May 16<sup>th</sup>, 2023

**Location 10:** Erosion starting due to water runoff from the adjacent homes. Fill and compact clean fill and sod all disturbed areas.



**Location 11:** Exposed pipe. Compact #57 stone under and around pipe to joint. Place rip rap extending 2' out from the pipe to deter erosion under the existing pipe. Sod all disturbed areas.





May 16<sup>th</sup>, 2023

**Location 12:** Erosion present along pond bank. Based on location and historical photographic imagery, erosion appears to have been caused by surface water runoff and fluctuating water levels over a period of time. See pond erosion detail page for recommended repair. Refer to key map for location details.



**Location 13:** Erosion present along pond bank. Based on location and historical photographic imagery, erosion appears to have been caused by surface water runoff and fluctuating water levels over a period of time. See pond erosion detail page for recommended repair. Refer to key map for location details.





May 16<sup>th</sup>, 2023

**Location 14:** Erosion present along pond bank. Based on location and historical photographic imagery, erosion appears to have been caused by surface water runoff and fluctuating water levels over a period of time. See pond erosion detail page for recommended repair. Refer to key map for location details.



**Location 15:** Missing control structure grate. Remove vegetation around outfall structure 5' around.





May 16<sup>th</sup>, 2023

**Location 16:** Due to motorised vehicles driving on the pond banks there are ruts on the pond bank use fill dirt and sod all disturbed areas.



**Location 17:** Missing turf on pond bank. Place sod to match the surrounding grades.



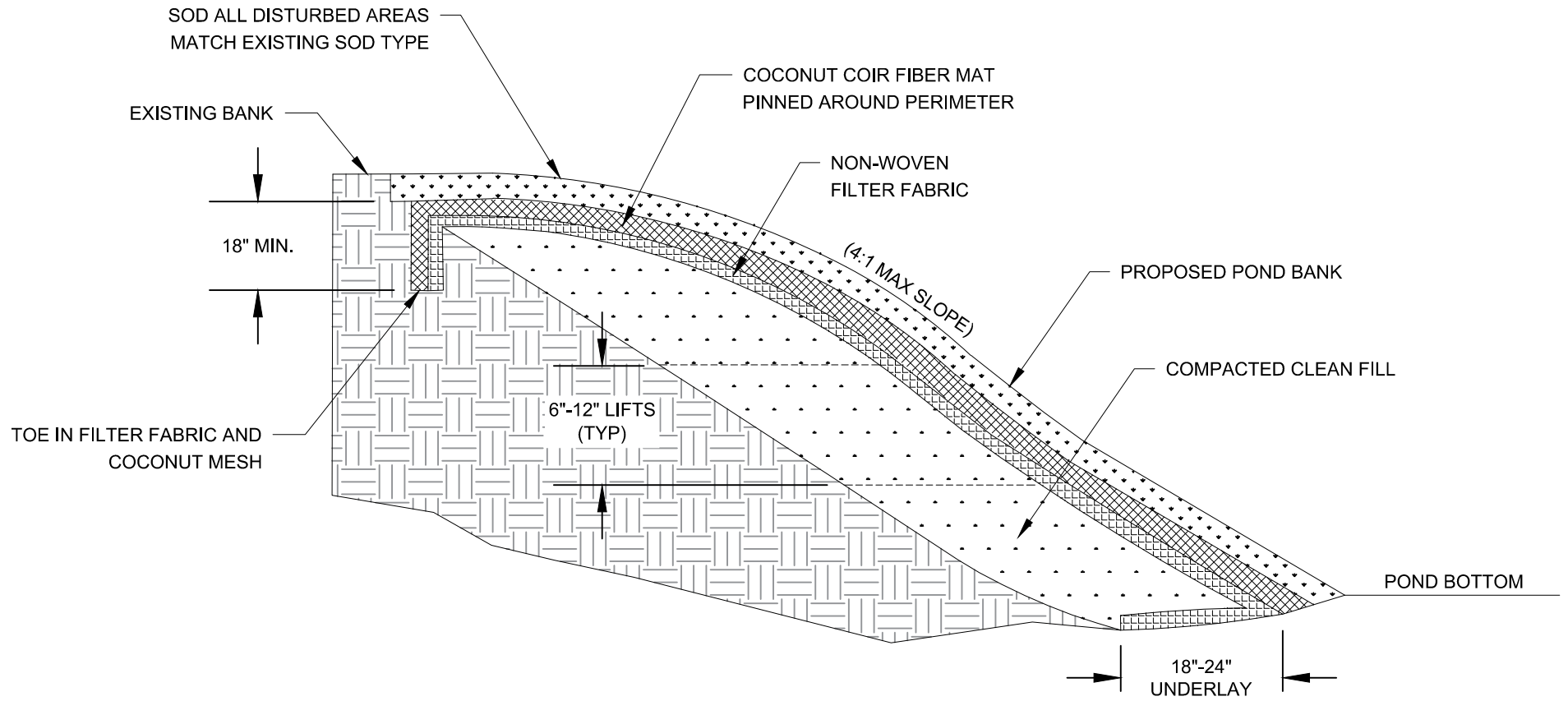
May 16<sup>th</sup>, 2023

**Location 18:** Remove vegetation 5' minimum around existing control structure.



**Location 19:** Erosion observed around the existing control structure. Repair eroded areas with rip rap. Refer to rip rap repair detail included with this report for repair. All disturbed areas are to be sodded.

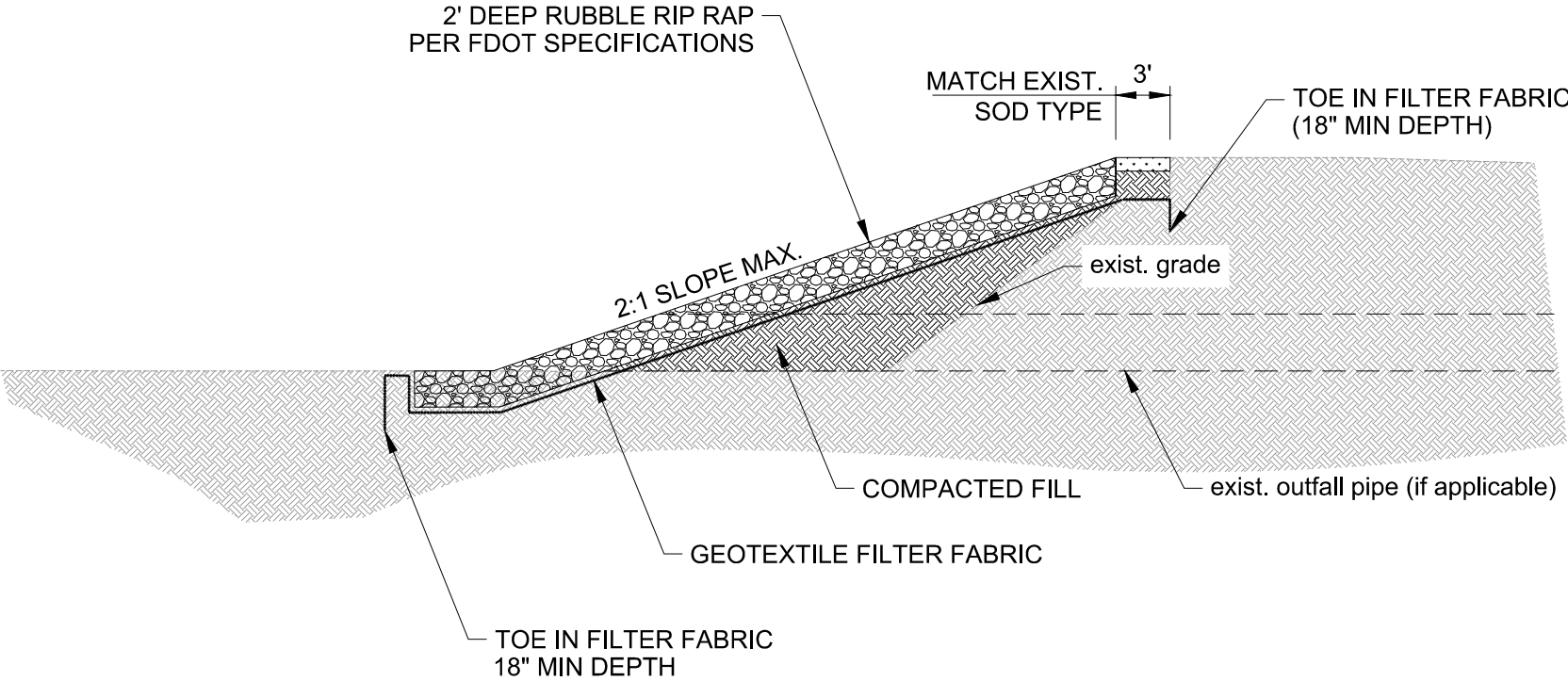




## POND EROSION REPAIR DETAIL

N.T.S.





RIP RAP RESTORATION DETAIL  
N.T.S.

# ESTIMATE

**Finn Outdoor**  
730 20th Ave N  
Saint Petersburg, FL 33704

robb@finnoutdoor.com  
(813)957-6075



## Gramercy Farms CDD

**Bill to**  
Gramercy Farms CDD

**Ship to**  
Gramercy Farms CDD

### Estimate details

Estimate no.: 2087  
Estimate date: 10/11/2023

#	Date	Product or service	SKU	Qty	Rate	Amount
1.		<b>O and M Items</b> Phase 8, Location 1 -- Restore approximately 20 linear feet of pond bank with fill and geotextile fabric per the provided detail.		1	\$2,900.00	\$2,900.00
				<b>Total</b>		<b>\$2,900.00</b>



May 16<sup>th</sup>, 2023

Stantec visited Gramercy Farms on Tuesday May 16<sup>th</sup>, 2023 to review ponds associated with SFWMD Operation and Maintenance Phase 8 due for renewal. Some of the items reviewed during in our inspection include, ensuring drainage structures are free of defects and functioning as intended, pond banks are graded correctly and do not have erosion present, and vegetation both within the ponds and beyond the top of bank do not inhibit the functionality of the overall pond system. We have provided location maps and photographic documentation below with recommendations for repairs, to ensure the ponds continue to function as designed.

Vasili Kostakis

Project Engineer

Stantec

(727) 431-1528

Vasili.kostakis@Stantec.com



Location 1

Sweet Acrs Pl

Sweet Acrs Pl

651 Michigan Estates

Packard Ave

Lakes Crest Ave

Tropical Cut Grooming

ORGANICE SOLUTIONS

Glencrest Loop

Orchard Grove Rd

Gramercy Farm Boulevard

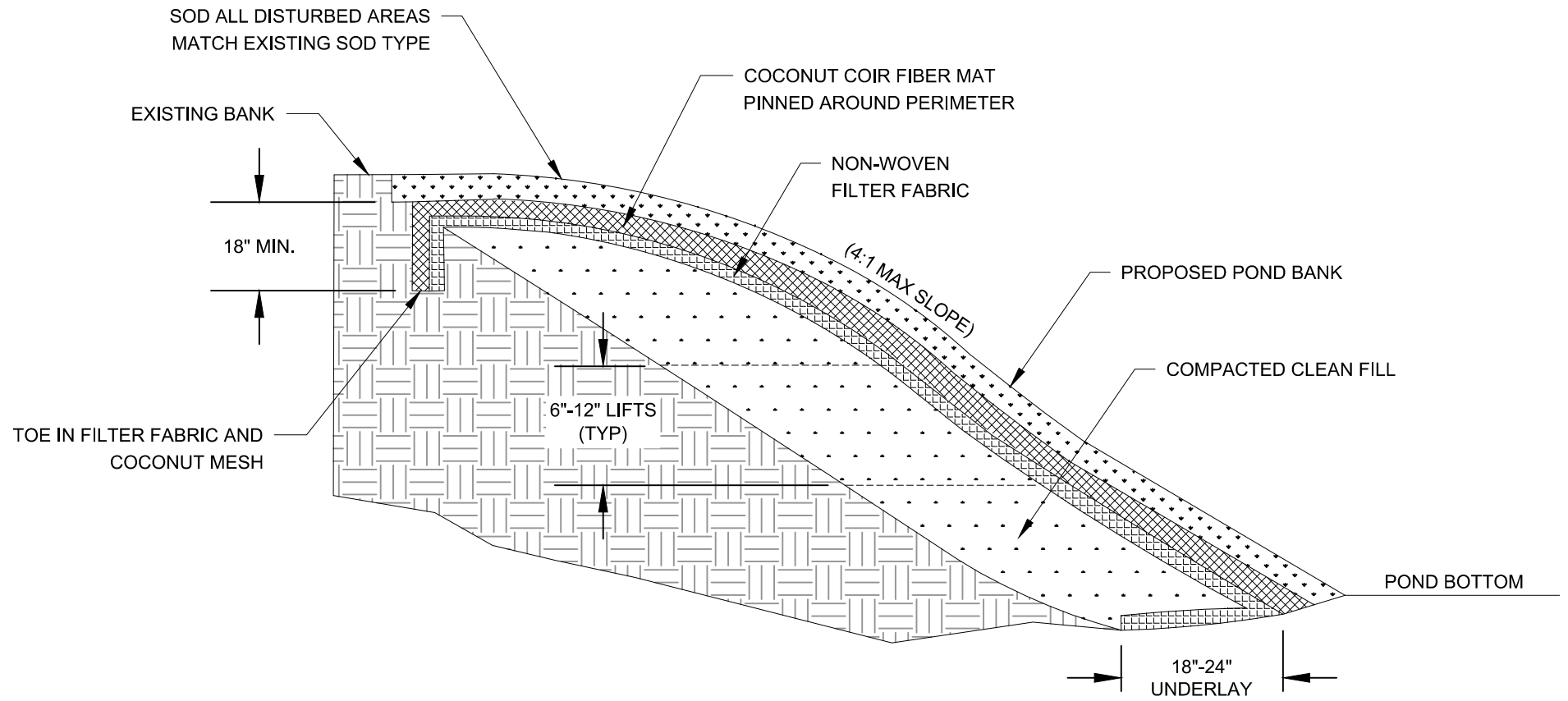
Calumet Dr



May 16<sup>th</sup>, 2023

**Location 1:** Erosion present along pond bank. Based on location and historical photographic imagery, erosion appears to have been caused by surface water runoff and fluctuating water levels over a period of time. See pond erosion detail page for recommended repair. Refer to key map for location details.





## POND EROSION REPAIR DETAIL

N.T.S.